



ACCESS FOR HUMANITY

Reaching out to All...



Organizational **PROFILE** 2023

- 📍 Plot No. 647/648 Hai Gudele Block 7
Juba, South Sudan
- ✉️ info@accessforhumanity.org
admin@accessforhumanity.org
- 🌐 www.accessforhumanity.org
- ☎️ +211 924 246 682
+211 927 757 878
+211 928 633 111



Table of Contents

1. Our background	04
2. Our vision	04
3. Our mission	04
4. Our core values	05
<i>a. Equity:</i>	05
<i>b. Dignity of the human person:</i>	05
<i>c. Community ownership:</i>	05
<i>d. Good governance:</i>	05
<i>e. Pro-poor service delivery:</i>	05
<i>f. Women's empowerment:</i>	06
<i>g. Child protection:</i>	06
<i>h. Innovation and research:</i>	06
5. Our objectives	06
<i>a. Health and Nutrition:</i>	06
<i>b. Education:</i>	06
<i>c. Food security and livelihood:</i>	06
<i>d. Water, hygiene and sanitation (WASH):</i>	06
<i>e. Emergency preparedness and response:</i>	07
<i>f. Peace and reconciliation:</i>	07
<i>g. Women's empowerment:</i>	07
<i>h. Child protection:</i>	07
<i>i. Innovation and operational research:</i>	07
<i>j. Advocacy:</i>	07
6. Where we work	07
7. What we do	08
<i>a. Routine Immunization Strengthening/ Operational support; Supporting the</i>	08

Table of Contents

MOH in 35 Counties in the Greater Upper Nile Region:	08
<i>b. Community-based surveillance for polio</i>	08
<i>c. Community-based surveillance and Routine Immunization Activities amongst Nomadic Population in Raja County</i>	08
<i>d. Outreach Immunization Activities</i>	08
<i>e. WASH activities:.....</i>	08
<i>f. Non-Food Items (NFIs) Activities</i>	08
<i>g. Polio Stool Sample Adequacy and Shipment</i>	08
<i>h. COVID-19 Vaccination Campaign</i>	08
<i>i. Administrative services to McKing Consulting Corporation consultants.....</i>	08
How we work.....	08
Who we work with.....	09
Our funders/donors, sponsors and partners.....	09
8. Workforce and Beneficiaries	10
9. Our governing structure.....	10
10. Activity gallery.....	11
11. <i>Activity gallery (1)</i>	11
12. <i>Activity gallery (2)</i>	12
13. <i>Activity gallery (3)</i>	13
<i>Activity gallery (4)</i>	14
<i>Activity Gallery (5)</i>	15



ACCESS FOR HUMANITY

Reaching out to All...

1. OUR BACKGROUND

Access for Humanity (AFH) is a national, humanitarian, non-profit making, non-sectarian and developmental non-governmental organization, registered by the South Sudan Relief and Rehabilitation Commission (RRC). AFH was founded by a group of concerned

South Sudanese professionals from across the country with the aim of reaching out to all individuals and communities in need of humanitarian and developmental response across the country.



2. OUR VISION

To see well-informed communities that are free from health-related issues, free from food insecurity, where there is social justice and gender equity, where women are empowered and women's and children's rights are protected, where everyone live in peace and coherence with one another in a sustainable environment, and where humanitarian crises are prevented and/or challenged.



3. OUR MISSION

The mission of Access for Humanity is to actively provide access to and deliver humanitarian services to vulnerable people and communities in times of crises as well as developmental services.



4. OUR CORE VALUES

The core purpose of Access for Humanity (AFH) is to ensure individuals and communities access relevant and sustainable solutions to their unique and prevailing needs, while ensuring:

EQUITY

- a. AFH believes in the residual values of equity and nurtures an environment where fairness, impartiality and justice are main staple in the relationship between and among individuals of all backgrounds.

DIGNITY OF THE HUMAN PERSON

- b. AFH treats dignity of the human person as sacred and unbreakable and as an essential right. It shall lead social actions to eliminate dehumanizing poverty, intolerable living and working conditions, and unjust social, political, economic and cultural structures.

COMMUNITY OWNERSHIP

- c. AFH believes in active community participation where a community plans, decides and implements their operations and also enjoys the benefits arising. Therefore, AFH empower individuals, families and communities to acquire knowledge and skills, which will enable them to make decisions and act on them.

GOOD GOVERNANCE

- d. AFH promotes good stewardship, integrity of innovation, transparency, responsiveness, consensus-oriented leadership, equity and inclusiveness, accountability, financial security, efficiency and participation.

PRO-POOR SERVICE DELIVERY

- e. All the interventions of AFH are tailored towards more accessibility, effectiveness, acceptability, affordability, and availability to all individuals, families and communities in need.



f.

WOMEN'S EMPOWERMENT

AFH empowers women to fully participate in economic activities across all sectors, enjoy their right to govern and benefit from resources, revenue, possessions and their own time, while able to manage risk and improve their economic well being and status. This is expected to develop stronger economies, improve the quality of life for women, men, families and communities, and attain internationally decided goals for development and sustainability.

g.

CHILD PROTECTION

AFH works to ensure children are protected from violence, abuse, exploitation and neglect.

h.

INNOVATION AND RESEARCH

AFH works to promote modern innovation in order to ensure better solutions that meet novel requirements. AFH also works to establish evidence and reach new conclusions leading to better decisions and policies that will improve the human life through scientific/operational research.

5. OUR OBJECTIVES

Access for Humanity is established to provide access to and achieve the following objectives:

a.

HEALTH AND NUTRITION: To improve the health and nutritional status of individuals, families and communities through provision of essential and emergency health and nutritional services based on practically, scientifically sound and socially acceptable methods and technologies, made universally accessible, affordable and sustainable.

b.

EDUCATION: To improve the literacy rate of the most disadvantaged communities

c.

through provision of quality primary and secondary education.

FOOD SECURITY AND LIVELIHOOD: To improve the food security and livelihood of individuals, families and communities through provision of enhanced and sustainable agricultural and livestock through modern methods and technologies.

d.

WATER, HYGIENE AND SANITATION (WASH): To reduce the proportion of individuals who are unable to access or afford safe and clean drinking water and those who do not have access to adequate

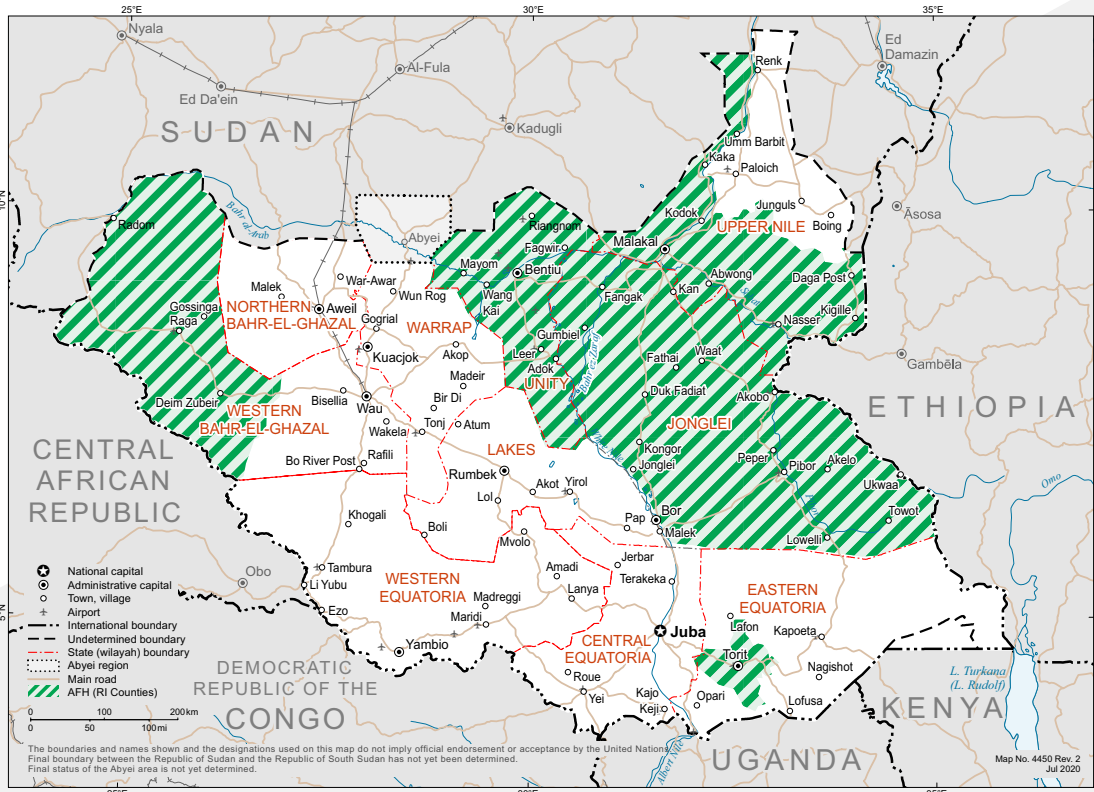
- e** hygiene and sanitation facilities.
- EMERGENCY PREPAREDNESS AND RESPONSE:** To provide emergency services to individuals, families and communities including internally displaced persons, refugees and returnees in times of humanitarian crises.
- f** **PEACE AND RECONCILIATION:** To promote peace building, reconciliation and advocate for justice between and among individuals, families and communities.
- g** **WOMEN'S EMPOWERMENT:** To ensure women are empowered in order to develop stronger economies, improve the quality of life for women, men, families and communities, and attain internationally decided goals for development and sustainability;

- h** **CHILD PROTECTION:** To ensure children are protected from violence, abuse, exploitation and neglect.
- i** **INNOVATION AND OPERATIONAL RESEARCH:** To improve the human life through innovative solutions and making better policies from evidence generated by scientific research.
- j** **ADVOCACY:** To advocate for community's social and developmental interest, and mobilize local resources and other source of income from individuals, international institutions, state governments, groups and other donors.

6. WHERE WE WORK

Access for Humanity works:

- **Greater Upper Nile Region** (Jongeli, Unity and Upper Nile): 33 counties including Bor South, Twic East, Islands of Bor, Twic East and Duk, Duk, Pibor, Boma, Fangak, Pigi/Canal, Islands of Ayod and Fangak, Uror, Nyirol, Ayod, Akobo, Pochalla, Nasir, Ulang, Maiwut. Longochuk, Malakal, Baliet, Akoka, Fashoda, Manyo, Panyikang, Rubkona, Parieng, Guit, Mayom, Abiemnom, Leer, Koch, Mayendit, and Panyijar.
- **Western Bahr El Ghazal State:** 4 payams of Raja County.
- **Eastern Equatoria State:** Torit County.



7. WHAT WE DO

Access for Humanity (AFH) provides the following services:

A ROUTINE IMMUNIZATION STRENGTHENING/ OPERATIONAL SUPPORT; SUPPORTING THE MOH IN 33 COUNTIES IN THE GREATER UPPER NILE REGION:

- Routine Immunization (RI) training of health facility vaccinators.
- Routine Immunization training for County Health Department EPI Managers (Management Training).
- Routine Immunization support supervision and on-the-job training.
- Strengthening Routine Immunization data management.
- Cold Chain maintenance, installation and repair.
- Mobile immunization activities in the Nile River Islands for unreached populations (Bor, Twic East, Duk, Ayod and Fangak).
- Social mobilization for Routine Immunization.

B COMMUNITY-BASED SURVEILLANCE FOR POLIO in 23 counties in the Greater Upper Nile Region of South Sudan. In-country management of the Bill & Melinda Gates Foundation funding for Polio Eradication in South Sudan through management of three implementing partners in South Sudan.

C COMMUNITY-BASED SURVEILLANCE AND ROUTINE IMMUNIZATION ACTIVITIES AMONGST NOMADIC POPULATION IN RAJA COUNTY; working with the nomadic population in Raja County of Western Bahr El Ghazal state.

8. HOW WE WORK

Access for Humanity works through:

- Health Officers, Routine Immunization Supervisors, Island Supervisors, County Supervisors and Payam

D OUTREACH IMMUNIZATION ACTIVITIES: In Torit County of Eastern Equatoria State; targeting health facilities which are not funded and does not have functional cold chain system.

E WASH ACTIVITIES: Provision of integrated WASH activities with COVID-19 awareness, training of Hygiene Promoters at Boma and Payam levels, distribution of WASH related items to households, schools and health facilities in Torit County of Eastern Equatoria State.

F NON-FOOD ITEMS (NFIs) ACTIVITIES: Provision of non-food items to orphanage children, IDPs and returnees in Juba and Kajo-Keji Counties of Central Equatoria State.

G POLIO STOOL SAMPLE ADEQUACY AND SHIPMENT: Polio stool sample adequacy, and effective and timely shipment from point of sample collection in the field/villages up to the national public health laboratories in Juba for 12 counties in the Greater Upper Nile region.

H COVID-19 VACCINATION CAMPAIGN: AFH provide vaccination campaign for COVID-19 vaccines in Pigi/Canal County.

I ADMINISTRATIVE SERVICES TO MCKING CONSULTING CORPORATION CONSULTANTS (contracted by the Bill & Melinda Gates Foundation) in South Sudan; provision of logistical and administrative support to the consultants in-country.

Assistants; these are health professionals who are based in the respective field locations and are directly responsible for the implementation of the

AFH activities at their various field-levels.

- Field coordinators and officers from various sectors such as WASH, education, etc. who are based at various field-levels and are directly responsible for the overall implementation of AFH various projects at field-level.
- Project Coordinators, who are assigned as in-charge of specific number of counties in the Greater Upper Nile region. The Field Project Coordinators are supported by in-Juba based project personnel including Project Manager, Finance Manager, Finance Officers, M&E Manager, admin and logistics personnel.
- Three implementing partners who have full-time project staff in all the counties across the Greater Upper Nile region. Some of AFH implementing

partners include Children Aid South Sudan (CASS) and UNKEA.

- Public Health Consultants who visits all the counties in the Greater Upper Nile region and Western Bahr El Ghazal State for support supervision, routine immunization training, county health department management training.
- Cold Chain Repair Technicians, who visits counties in need of cold chain repairs in the
- Greater Upper Nile region to repair their cold chain and also to train county health department cold chain personnel on local maintenance of the cold chain equipment.
- Field Logistic/Admin Assistants who organize and coordinate all administrative and logistics needs in the counties.

- **Ministry of Health** at the national, state and county levels for the delivery of primary health care services, including routine immunization, disease surveillance and collaboration with other health implementing partners in the country.
- **World Health Organization** regarding the polio surveillance and COVID-19 vaccination campaign.
- **UNICEF** regarding EPI cold chain equipment installation, repair and maintenance, COVID-19 vaccination campaign and WASH activities in schools, health facilities and community.
- **VillageReach** regarding polio stool sample adequacy, and effective and timely shipment from point of sample collection in the field/villages up to the national public health laboratories in Juba.
- **Children Aid South Sudan (CASS)** and **Universal**

9. WHO WE WORK WITH

Network for Knowledge and Empowerment Agency (UNKEA) are national NGOs that are implementing partners for AFH in 23 counties in the GUN regions for the community-based surveillance activities of polio.

- **Ministry of Education and Instruction**, regarding hygiene and sanitation in schools in Torit County of Eastern Equatoria State.
- **Ministry of Housing Land and Public Utilities** regarding the provision of integrated WASH activities with COVID-19 awareness, training of Hygiene Promoters at Boma and Payam levels, distribution of WASH related items to households, schools and health facilities in Torit County of Eastern Equatoria State.
- Various other humanitarian stakeholders.
- Community volunteers

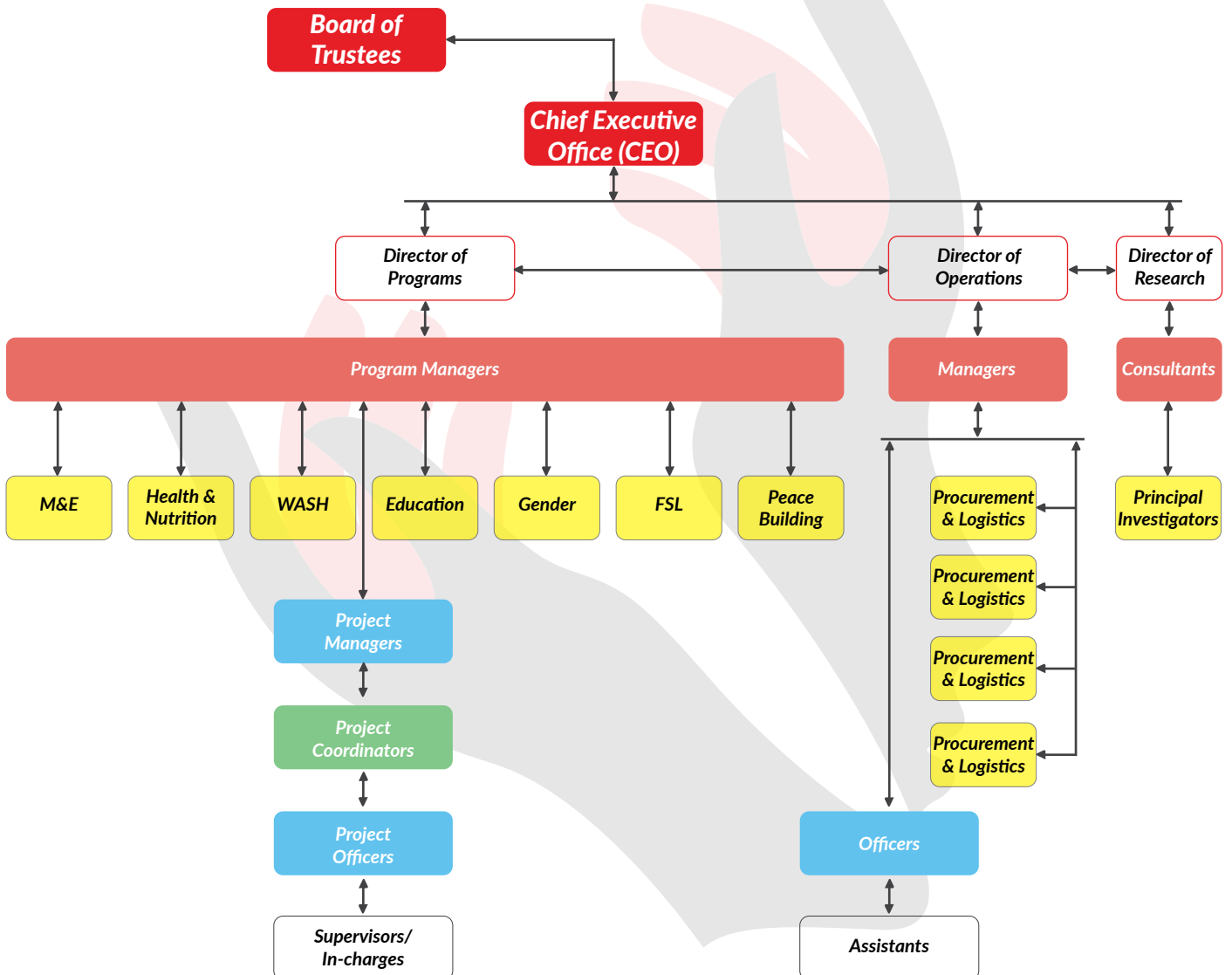
10. OUR FUNDERS/ DONORS, SPONSORS AND PARTNERS



11. WORKFORCE & BENEFICIARIES



12. OUR GOVERNING STRUCTURE



13. ACTIVITY GALLERY

Activity Gallery (1)



S. Supervision@Kawer Island - Duk
May 13, 2020 5:43:51 PM



S. Supervision@Malek PHCU Bor South
May 26, 2020 11:11:41 AM



Activity Gallery (2)



Activity Gallery



Activity Gallery (4)



Activity Gallery (5)





**ACCESS
FOR HUMANITY**

Reaching out to All...

Contact Us

-  Plot No. 647/648 Hai Gudele Block 7
Juba, South Sudan
-  info@accessforhumanity.org
admin@accessforhumanity.org
-  www.accessforhumanity.org
-  +211 924 246 682
+211 927 757 878
+211 928 633 111